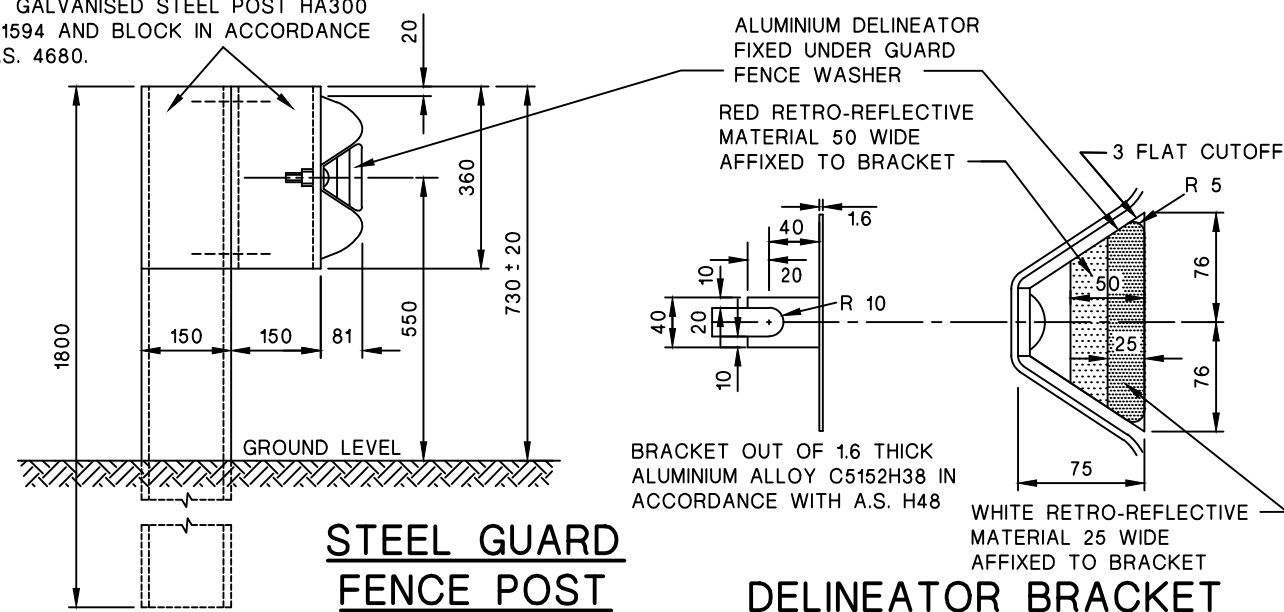
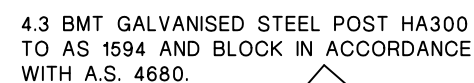
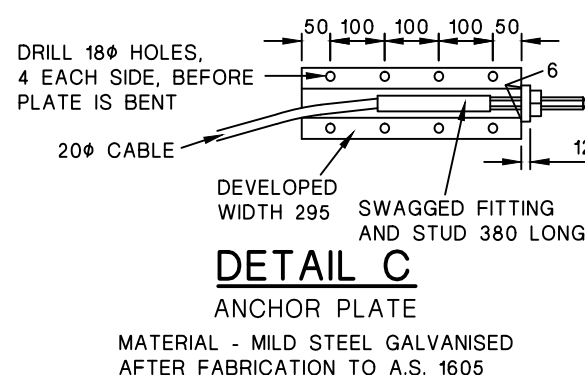
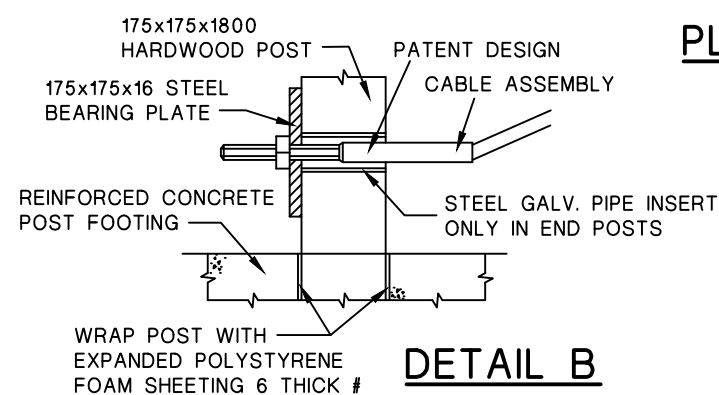
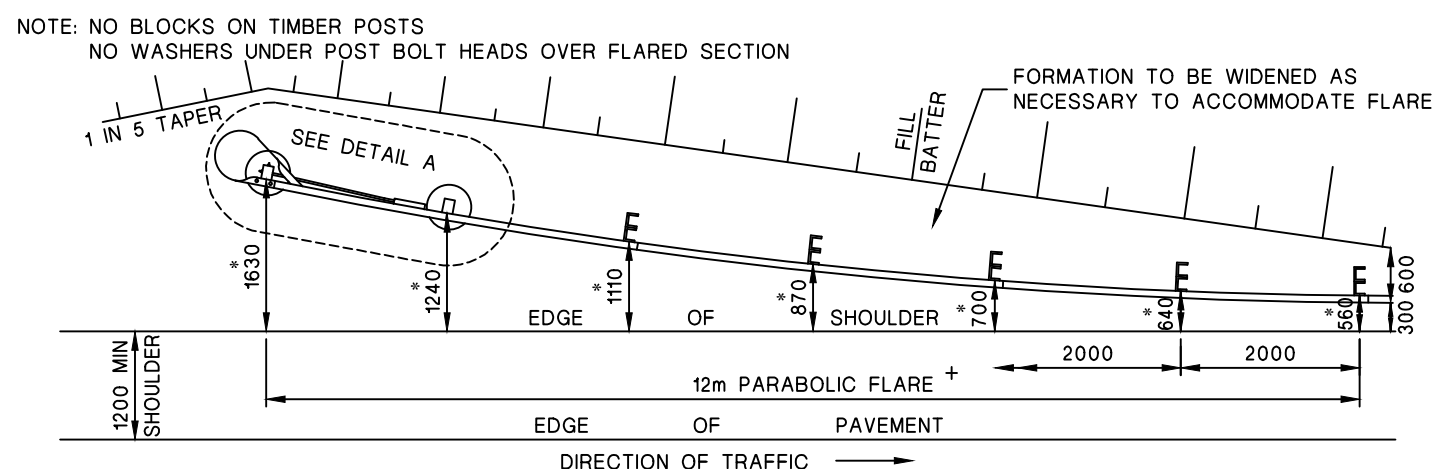


NOTES

- + FOR UNDIVIDED CARRIAGEWAYS FLARE BOTH APPROACH AND DEPARTURE ENDS OF RAIL.
FOR DIVIDED CARRIAGEWAYS FLARE ONLY APPROACH END OF RAIL. APPROACH USE TYPE 'A' TERMINAL SECTION, DEPARTURE USE TYPE "B".
* DIMENSION INCLUDES 300 CLEARANCE ON MAJOR ROADS.
ALTERNATIVELY PROVIDE COMPOUND PAPER LINING IN FOOTINGS.

NOTES ON TERMINAL SECTIONS

1. PROTECTIVE TREATMENT - HOT-DIPPED GALVANISE CONFORMING TO A.S. 1650.
2. MATERIAL:-
 - (a) STEEL SHALL BE MADE BY OPEN HEARTH, A BASIC OXYGEN OR ELECTRIC PROCESS AND SHALL BE SUCH THAT THE PROPERTIES HEREINAFTER CAN BE OBTAINED.
 - (b) ELONGATION & TENSILE STRENGTH - WHEN TESTED IN ACCORDANCE WITH A.S. 1391 METHOD FOR TENSILE TESTING OF METALS, A NON-PROPORTIONAL RECTANGULAR TEST PIECE AS SPECIFIED IN CLAUSE 7 OF A.S. 1391, OF GAUGE LENGTH 50, SHALL HAVE AN ELONGATION OF NOT LESS THAN 12% OF THIS GAUGE LENGTH AND A TENSILE STRENGTH OF NOT LESS THAN 293MPa.



STEEL GUARD
FENCE POST

DELINEATOR BRACKET

THE HILLS SHIRE COUNCIL

DATE:
JUNE 2013

DRAWING No.:

SD.38

GUARD FENCES